



REGINA IPL ICE SHR⁺⁺

IRONING SHR SQUARE PULSE ICE HANDLE TECHNOLOGY

ONLY DEVICE COMBINING THE FOUR BEST TECHNOLOGY OF THE WORLD!

SHR IRONING IPL TECHNOLOGY <
SQUARE PULSE TECHNOLOGY <
PATENTED RVC TECHNOLOGY <
(REAL VALUE CALIBRATION)
TEC ICE HEADPIECE TECHNOLOGY <



REGINA IPL ICE SHR⁺⁺ has the best clinical results obtained until today. The device adopts square pulse and constant current charging technology, which emits constant energy to realize optimum clinical results. Easy and customized interface makes it flexible for individual clinical procedure. Patented **RVC** (Real Value Calibration) **Technology** ensures accurate energy to meet the user's needs.

One of the biggest problems in IPL devices is that the lamp gradually decrease the energy given and is unable to constant energy needed as it is used. Thanks to **RVC Technology**, the device controls the power of the lamp and increases or decreases the energy automatically. Therefore, it always provides true and constant energy. Cooling technology used on the headpiece minimizes the pain and scalds by cooling the skin.

| A Breakthrough in IPL TECHNOLOGY: SQUARE PULSE IPL TECHNOLOGY! |

REGINA IPL ICE SHR⁺⁺ uses the "square pulse" technology to provide constants and pain-free energy output. Energy could instantaneously achieve peak power which could keep stable during the entire pulse duration. No matter it is acted with single pulse mode or multi pulse mode, **REGINA IPL ICE SHR⁺⁺** always present uniform and accurate energy.

In other technologies, energy is suddenly maximized and lead to ineffective treatment result and increase risk of side effect with pain and scald.

In **REGINA IPL ICE SHR⁺⁺** "square pulse" technology, the total energy is reached by giving the minimum energy gradually, thus the risk of side-effects is minimized, the life of the lamp and the filter last longer.

| WHAT is the DIFFERENCE BETWEEN the TRADITIONAL IPL and REGINA II ICE |

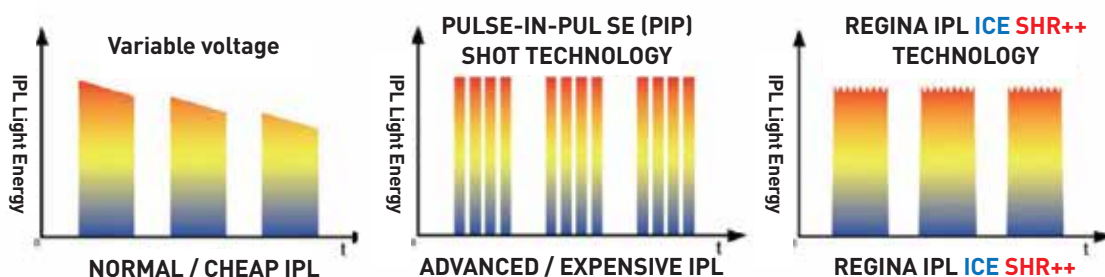
1-) **REGINA IPL ICE SHR⁺⁺** makes comfort as the first priority as well as delivering maximum treatment efficiency. In **REGINA IPL ICE SHR⁺⁺** "square pulse" technology, the total energy is reached by giving the minimum energy gradually, thus the risk of side-effects is minimized, the life of the lamp and the filter last longer.

2-) Thanks to **RVC** (Real Value Calibration) function, the output energy could reach presetting energy level without any sudden energy fluctuation.

3-) 10 shots per second gives the total energy in instead of giving it on one shot. Thus, the pain is minimized and fast epilation can be applied.

4-) The device has double filter system which allows energy to focus on the hair follicle directly without tackling in blood, connective tissues.

5-) One of the biggest problems in IPL devices is the original lightbulb and the original filter. When lightbulb can be changes, filter can not be changes, and vice versa. Neither can not be changed at the same time. In **REGINA IPL ICE SHR⁺⁺**, when the lightbulb life expires, the old headpiece is disposed and new headpiece is used, therefore there won't be any filter or lightbulb problem, as well as the headpiece malfunctions. **REGINA IPL ICE SHR⁺⁺** can be used with one year unlimited shots or 200.000 shots headpiece depending on request. Your device is delivered with 1 YEAR UNLIMITED SHOTS in the purchase.



ADVANTAGES

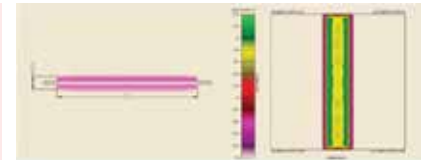
1 12-HOURS NON-STOP FLASHING

Powerful cooling system and energy control unit enable the operator to provide uninterrupted treatment.



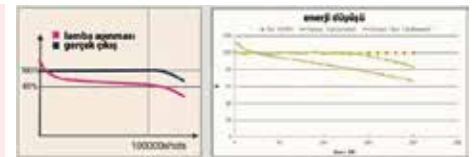
2 THE BEST XENON LAMP FROM UK

REGINA IPL ICE SHR++ adopts durable & powerful Xenon tube from UK. Premium quality tube guarantee a life span of 100.000 shots, up to 200.000 shots maximum.



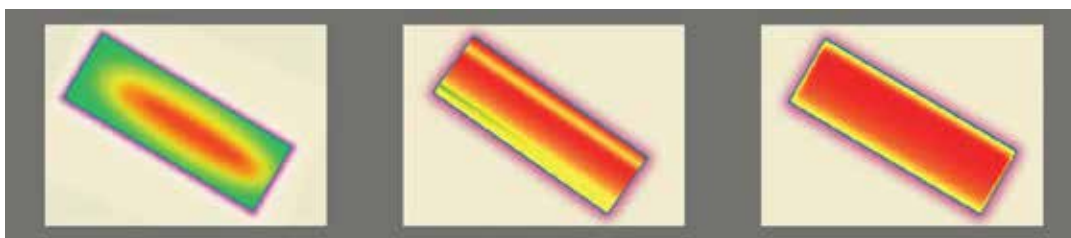
3 PATENTED RVC (REAL VALUE CALIBRATION) TECHNOLOGY

Real value calibration ensures accurate fluency to reach the presetting energy, and highly reduce lamp degradation ineffectiveness due to energy attenuation. RVC technology makes handpiece to deliver more constant and accurate energy to skin within 100.000 shots flashing.



4 BIG SPOT SIZE WITH EVEN ENERGY DISTRIBUTION

Imported excellent tube at a diameter of 9mm for REGINA IPL ICE SHR++ guarantees even energy distribution and accurate fluency on 15X50mm spot size, which improves comfort and efficiency.



NORMAL / CHEAP IPL DEVICE ADVANCED / EXPENSIVE IPL DEVICE REGINA IPL ICE SHR++

5 ❄️ ADVANCED TEC COOLING SYSTEM

The thermoelectric semiconductor cooling system increases the temperature difference between superficial and subcutaneous tissue, making the therapy gentler. Adjustable TEC cooling with minimum -4°C protects epidermis while hair follicle is heated.



REGINA IPL ICE SHR++ functions on skin

Melanin in follicle absorbs light, and light energy transforms to heat energy

Hair is removed

6 Intuitive and intelligent operation interface

Three operation modes are available:

- > **Classical mode** provides intuitive operation interface to basic users
- > **Custom mode** is specially designed for professionals. You can adjust the power and application depending on your demand.
- > **SHR Rapid mode** is for Hair removal specially. It provides fast, painless epilation application with automatic program.



APPLICATIONS

Hair Removal • Skin Rejuvenation • Acne Treatment • Vascular Treatment • Pigmentation Treatment

HAIR REMOVAL

SKIN REJUVENATION

ACNE TREATMENT

CAPILLARY TREATMENT

PIGMENTATION TREATMENT



TECHNICAL SPECIFICATION

| | |
|-------------------------|--|
| Continuous working hour | 12 hours |
| Spot Size | 15 mm x 50mm, 10 mm x 40mm (SHR) |
| Repetition rate | Up to 10Hz |
| Cooling | TEC contact cooling |
| Wavelength | 600-950nm (HRNT) 500-950nm (SR/PT) 600-950nm (SHR) |
| Fluence | Up to 35J/cm ² |
| Pulse width | 1-30ms, Max 4 pulse |
| Working mode | Classical mode , SHR , Custom mode |