

AMELIA II

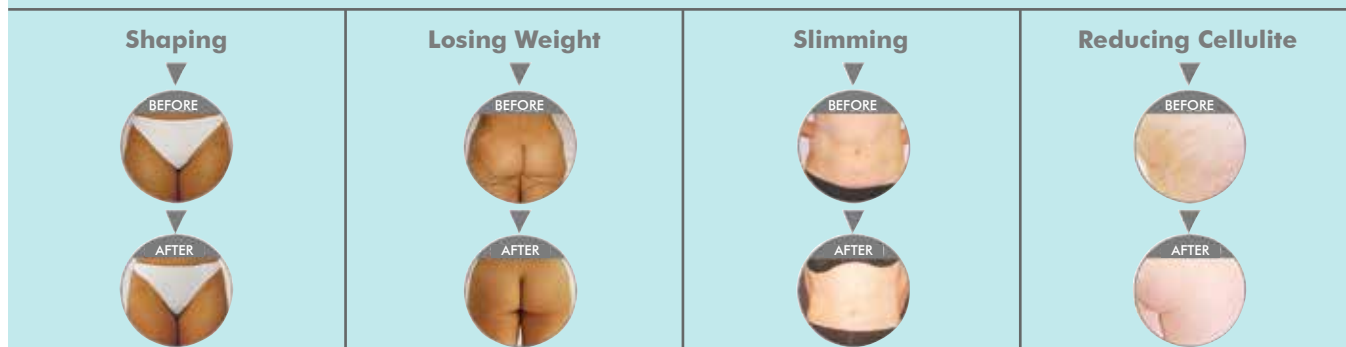
CRYOLIPOLYSIS & LIPO LASER

A DEVICE WHICH COMBINES
COOL LIPOLYSIS AND LIPO LASER TECHNOLOGIES

AMELIA II



BEFORE & AFTER AMELIA II TREATMENT:



WHAT HAPPENS TO FAT CELLS?

With the effect of cooling, there is a apoptosis (programmed cell death) change in cells and inflammation cells annihilate these cells in time. This process lasts for months and in the end, thick fat tissue reduces. The fats in the fat cells gradually release and they are transferred to lymphatic system like the fats we get with food.

TEDAVIDEN SONRA NE OLACAK?

CoolSculpting process is non-invasive. Most of the patients continue their routine working life and they can exercise even in the day treatment is applied. Temporary redness, cyanosis and numbness are the side effects. However, these effects recover a few hours after the treatment. The numbness reduces in 1-4 weeks. In this non-invasive procedure there is no need to use drug, anesthesia or pain killer. The operation is so comfortable and painless that you can read book, work in your laptop or listen to music during the operation.

HOW LONG WILL ITS EFFECT LAST?

According to the experiences of the patients, it is seen that the result of the operation lasts at least two years. The fat cells in treatment areas are naturally reduced. It is seen that this non-invasive procedure is as effective as liposuction which is an invasive procedure.

PARAMETERS:

Screen Size	10.4 inch TFT touchscreen
Cryolipolysis Handpiece	1 big handpiece
Lipo Laser Pads	8 pads
Lipo Laser Wavelength	Mitsubishi 650nm diode laser lamps
Lipo Laser Energy	0-120Mw, adjustable for each lamp
Cooling Temperature	-15°C - 5°C
Lipo Laser Vacuum Pressure	20-95KPA
Cooling Liquid	Distilled or pure water
Ambient Temperature	5°C - 40°C
Power	800W
Input Voltage	AC 230V/110V, 50 Hz/60Hz



New Technology
Touch Screen Cooling Handpiece



Japanese Mitsubishi Lipo Laser Pads



IT IS THE LAST WORD
IN REGIONAL SLIMMING!
JAPANESE MITSUBISHI
DIODE LASER LIPO TECHNOLOGY



AMELIA II

CRYOLIPOLYSIS & LIPO LASER

**NONSURGICAL
MEDICAL COSMETIC TECHNOLOGY
COOL LIPOLYSIS:**

- 1- Nonsurgical medical cosmetic technology
- 2- It has more advantages than liposuction
- 3- Most popular slimming technique in Europe and U.S.A.
- 4- 26% - 42% fat cell burning rate in treatment area
- 5- Better than RF and ultrasound technology in fat burning
- 6- Non-invasive technique for fat burning in waist, back and cellulite areas

COOL LIPOLYSIS TECHNOLOGY:

Before finding reduction of fat with cool lipolysis (tissue cooling) technique, many methods like laser, ultrasound and radio frequency and electrotherapy were used to burn fat cells.

Since the invention of this revolutionary technique, it has been an important device in burning fat cells.

The combination of Coolsculpting™ technology and cool lipolysis technique only targets fat cells and it is non-invasive. It protects other cells while removing fat cells out of the body.

In Coolsculpting™ technique, the fat cell is cooled via special design cooling handpiece. The handpiece pressures the tissue that stands between two cooling panels with vacuum. During the operation, the handpiece cools the treatment areas. When cooling process starts, fat cells are reduced with a controlled method.

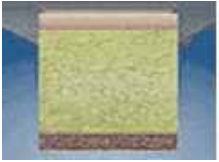
When exposed to cold, fat cells start reducing naturally and fat tissue is slimmed. Effective results can be obtained between 4 - 6 weeks. The fat cells in treatment areas are removed out of the body with a natural process that is similar to disposal of food.

Cool lipolysis is a perfect device for those who cannot manage to get rid of fat cells despite regular exercises and diet programs. You can obtain excellent results in areas containing fat cells in low or high rate like back or the sides of the body and abdomen (it enables fat reduction in thighs and sides of the waist).

COOLING TECHNOLOGY:

Triglyceride fats solidify in low temperatures. With its ultimate cooling technology, this device targets excessive fats and reduce them without harming the neighboring tissues. When the fat cells are cooled, they naturally go into a process that enables them to reduce. With this process, the fats in treatment areas are reduced. Controlled cooling is applied to the layer of fat in the body and thanks to the treatment, regional fats are burned easily. The process lasts one hour per every treatment area.

PROCESSES OF COOL LIPOLYSIS:



1- Controlled cooling handpiece affects the layer of fat.



2- Cooling effect protects the fat cells for a while.

With the effect of cooling, there is a apoptosis (programmed cell death) change in cells and inflammation cells annihilate these cells in time. This process lasts for months and in the end, thick fatty tissue reduces. The fats in the fat cells gradually release and they are transferred to lymphatic system like the fats we get with food.



3- Fat cells go into a reducing process that will last for several months.



4- Reducing process of the fat cells will be noticeably in time.

DIODE LIPO LASER TECHNOLOGY:

Lipo laser emits low levels of laser energy. The fat cell membranes are disrupted releasing intra-cellular fat. This causes the cell to lose its round shape by changing the permeability of the cell membrane. This does not affect skin, blood vessels, and peripheral nerves. Triglycerides spill out from the broken cell membranes and they are released into the interstitial space, where they are slowly transported through the body's natural metabolic functions, with no adverse physiological effects and are used by the body as an energy source. This mechanism of action is not "liquefaction of fat". It is instant emptying out of the cells rather than the destruction of them.

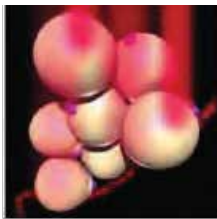
EFFECT OF DIODE LIPO LASER ON CELLS:

1- While fat cells are stable,



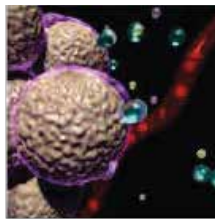
4- It transfers water, glycerol and free fat cells to tissue.

2- it affects laser beams and fat cells.

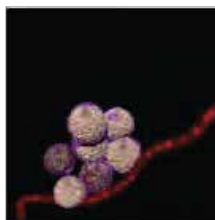
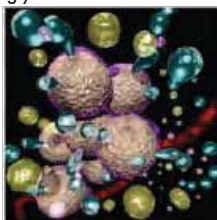
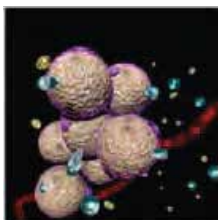


5- Transfer rate of water (blue), free fat cells (green) and glycerol increases.

3- It penetrates into fat cells and ejects intracellular tissue.



6- The fat cells shrink noticeably.



TREATMENT AREAS:

Waist, leg, thigh, face, back of the head and jawl.

TREATMENT TIME:

Treatment time consists of 30 minutes sessions of two times a week in the first two months. After two months, it becomes one session a month.

FEATURES:

Amelia II, newest design of 2013 which combines Zeltiq and i-Lipo Laser technology

- **Target Oriented:** Enables slimming in desired areas.
- **Quick:** Enables 5 – 15 cm slimming in a single session.
- **Safe:** Nonsurgical cold laser.
- **No side effects.**
- Cold laser and cold lipolysis operate at the same time.
- Cold lipolysis handpiece has a stylish design.
- It has a Japanese Mitsubishi 650nm laser lamp.
- It has a new plug connection design.
- It has a 10.4" big TFT touchscreen.
- It shows immediate effect.
- It is **pain-free**.
- Non-invasive (cold, red laser is not felt and it is a comfortable, quick treatment).
- Its 20 – 120 MW high power can be adjusted.

ADVANTAGES:

- Regional slimming
- Reducing and dissolving fat cells
- Reducing cellulite and stretch marks
- Cell renewal
- Creating massage effect
- Skin rejuvenation after surgical operations
- Treatment before and after liposuction, shortening recruitment process
- Stimulating cell activation
- Improving circulation
- Activating and functioning the metabolism