

| AGATHA++ |

DIODE LIPO LASER TECHNOLOGY

**A Device for Cellulite Treatment and
Regional Slimming
JAPANESE MITSUBISHI
DIODE LIPO LASER TECHNOLOGY!**





Touchscreen



6 big,
2 small pads



Big pad



A Device for Cellulite Treatment and
Regional Slimming
**JAPANESE MITSUBISHI
DIODE LIPO LASER TECHNOLOGY!**



AGATHA++

DIODE LIPO LASER TECHNOLOGY

Agatha;
Diode Lipo Laser Technology,

It is the last word in Cellulite Treatment
and Regional Slimming Technologies!

Japanese Mitsubishi
Diode Lipo Laser Technology!

LIPO LASER:

In lipo laser technology, diode laser beams focus on fat cells and penetrate into them. This enables disruption of cell membrane and release of fat in cells.

Clinical researches and results have shown that lipo laser system is highly efficient in reducing fats and cellulite.

In order to minimize cellulite and to increase micro circulation, diode laser system, which targets deep tissues, is used.

Fat increase around waist, back and abdominal area, sagging under chin are reduced even after a few application both in men and women.

LIPO LASER TECHNOLOGY:

The Laser Lipo emits low levels of laser energy. The fat cell membranes are disrupted releasing intra-cellular fat. This causes the cell to lose its round shape by increasing the permeability of the cell membrane.

This does not affect skin, blood vessels, and peripheral nerves. Triglycerides spill out from the broken cell membranes and they are released into the interstitial space, where they are slowly transported through the body's natural metabolic functions, with no adverse physiological effects and are used by the body as an energy source.

This mechanism of action is not "liquefaction of fat". It is instant emptying out of the cells rather than the destruction of them.

Diode laser lights which are generated by the system focus inside of the fat cells.

Melted fat gains a form to be removed by the body with normal methods.

TREATMENT AREAS:

Waist, leg, thigh, buttocks, face, back of the head and jowl.

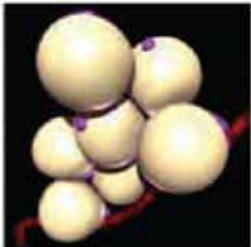
Treatment time consists 30 minutes sessions of two times in a week in the first two months. After two months, it becomes one session in a month.

ADVANTAGES:

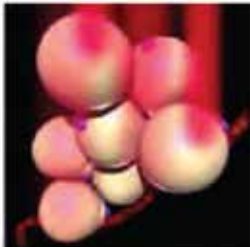
- Regional slimming
- Reduce in cellulite and body stretches
- Cell renewal
- Shrinking and melting in fat cells
- Cell activation
- Treatment before and after liposuction, shortening in recruitment process
- Improving body circulation
- Skin renewal after surgical operation
- Activating and functioning the metabolism



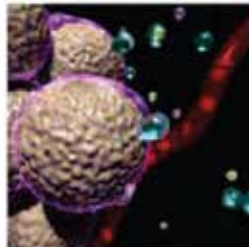
EFFECT OF LIPO LASER ON CELLS:



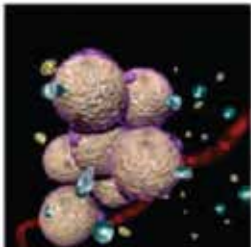
1- While fat cells are stable,



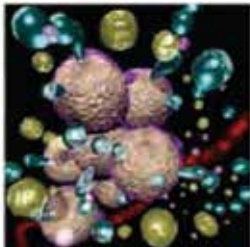
2- it affects laser beams and fat cells.



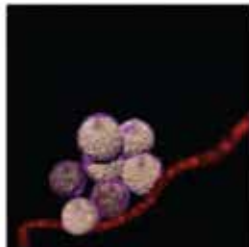
3- It penetrates into fat cells and ejects intracellular tissue.



4- It transfers water, glycerol and free fat cells to tissue.



5- Transfer rate of water (blue), free fat cells (green) and glycerol increases.



6- The fat cells shrink noticeably.

FEATURES:

- Immediate effect
- Painless treatment
- Non-invasive (Laser beams are not felt and that enables a comfortable and quick treatment)
- No side effects
- Japanese Mitsubishi Diode Laser Technology
- 8 pads (6 big pads, 2 small pads)
- Big touchscreen and multiple language choices
- Adjustable high power of 20-120 MW

BEFORE & AFTER LIPO LASER TREATMENT

Face Lifting

Body Slimming



Before



After



Before



After



Before



After



Before



After

PARAMETERS:

Wavelength	635nm-650nm
Treatment Pads	6 big and two small pads (8 pads in total)
Total Diode Laser Number	62 Diode Lasers
Single Diode Energy	20-120Mw (Adjustable)
Diode Laser Type	Japanese Mitsubishi
Power	400W
Power Source	220V 50 Hz/60 Hz

